



# Kamiichi Cycling

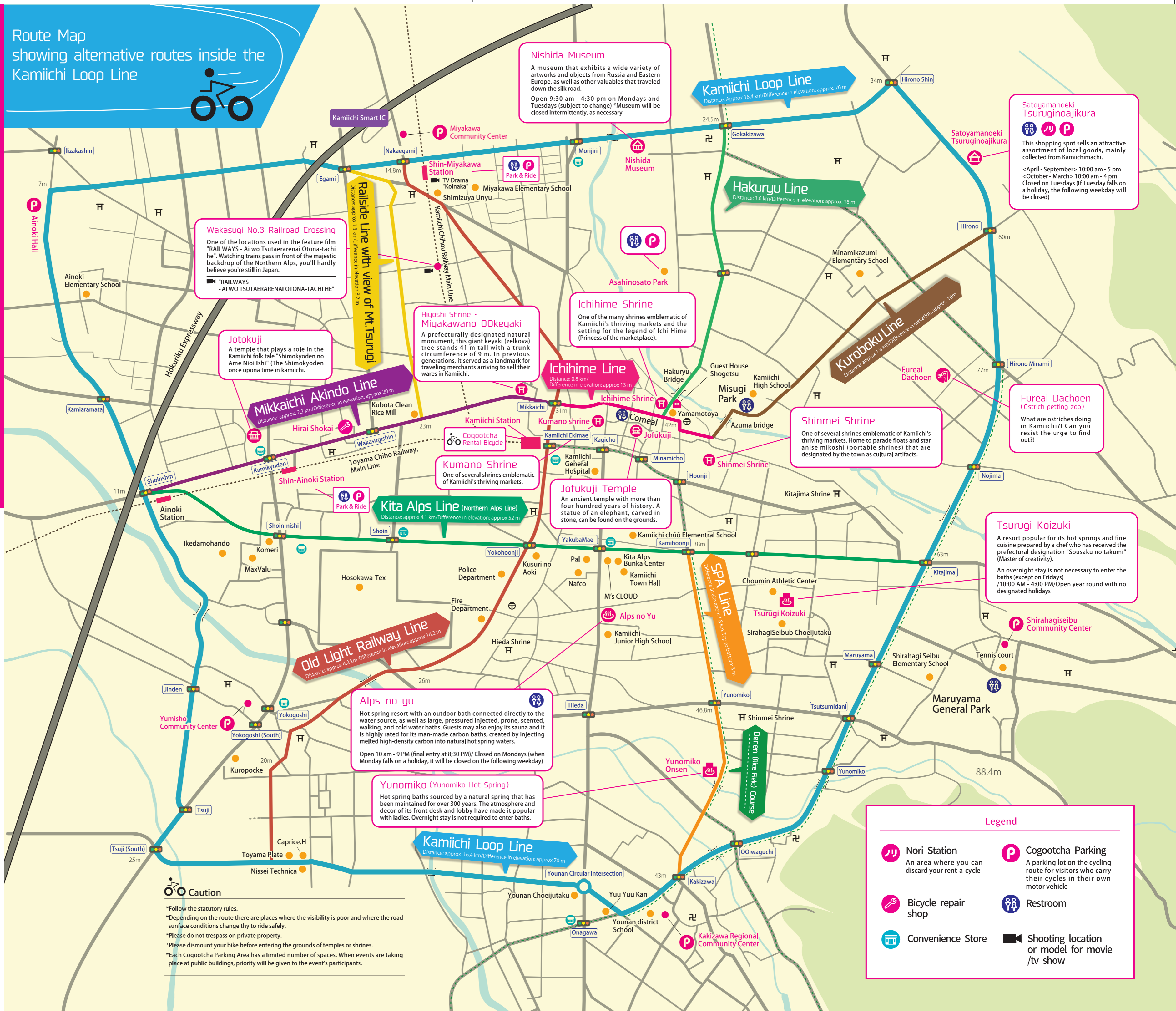


# COGOTCHA

# COGUTCHA CYCLING MAP

Connect the dots to create your own route.

## Route Map showing alternative routes inside the Kamiichi Loop Line



**Wakasugi No.3 Railroad Crossing**  
One of the locations used in the feature film "RAILWAYS - Ai wo Tsutaerarenai Otona-tachi he". Watching trains pass in front of the majestic backdrop of the Northern Alps, you'll hardly believe you're still in Japan.

**Jotokuji**  
A temple that plays a role in the Kamiichi folk tale "Shimokyoden no Ame Niol Ishi" (The Shimokyoden once upon a time in Kamiichi).

**Mikkaichi Akindo Line**  
Distance: approx. 2.2 km / Difference in elevation: approx. 20 m

**Railside Line with view of Mt. Tsunugi**  
Distance: approx. 1.3 km / Difference in elevation: 8.2 m

**Hiyoshi Shrine - Miyakawano Ookeyaki**  
A prefecturally designated natural monument, this giant keyaki (zelkova) tree stands 41 m tall with a trunk circumference of 9 m. In previous generations, it served as a landmark for traveling merchants arriving to sell their wares in Kamiichi.

**Nishida Museum**  
A museum that exhibits a wide variety of artworks and objects from Russia and Eastern Europe, as well as other valuables that traveled down the silk road.  
Open 9:30 am - 4:30 pm on Mondays and Tuesdays (subject to change) \*Museum will be closed intermittently, as necessary

**Ichihime Shrine**  
One of the many shrines emblematic of Kamiichi's thriving markets and the setting for the legend of Ichi Hime (Princess of the marketplace).

**Ichihime Line**  
Distance: 0.4 km / Difference in elevation: approx. 13 m

**Kumano Shrine**  
One of several shrines emblematic of Kamiichi's thriving markets.

**Jofukuji Temple**  
An ancient temple with more than four hundred years of history. A statue of an elephant, carved in stone, can be found on the grounds.

**Old Light Railway Line**  
Distance: approx. 4.2 km / Difference in elevation: approx. 16.2 m

**Alps no yu**  
Hot spring resort with an outdoor bath connected directly to the water source, as well as large, pressured injected, prone, scented, walking, and cold water baths. Guests may also enjoy its sauna and it is highly rated for its man-made carbon baths, created by injecting melted high-density carbon into natural hot spring waters.  
Open 10 am - 9 PM (final entry at 8:30 PM) / Closed on Mondays (when Monday falls on a holiday, it will be closed on the following weekday)

**Yunomiko (Yunomiko Hot Spring)**  
Hot spring baths sourced by a natural spring that has been maintained for over 300 years. The atmosphere and decor of its front desk and lobby have made it popular with ladies. Overnight stay is not required to enter baths.

**Kamiichi Loop Line**  
Distance: approx. 16.4 km / Difference in elevation: approx. 70 m

**Satoyamanoeki Tsuruginoajikura**  
This shopping spot sells an attractive assortment of local goods, mainly collected from Kamiichimachi.  
<April - September> 10:00 am - 5 pm  
<October - March> 10:00 am - 4 pm  
Closed on Tuesdays (if Tuesday falls on a holiday, the following weekday will be closed)

**Fureai Dachoan (Ostrich petting zoo)**  
What are ostriches doing in Kamiichi?! Can you resist the urge to find out?!

**Tsurugi Koizuki**  
A resort popular for its hot springs and fine cuisine prepared by a chef who has received the prefectural designation "Sousaku no takumi" (Master of creativity).  
An overnight stay is not necessary to enter the baths (except on Fridays) / 10:00 AM - 4:00 PM / Open year round with no designated holidays

**Legend**

- Nori Station: An area where you can discard your rent-a-cycle
- Cogootcha Parking: A parking lot on the cycling route for visitors who carry their cycles in their own motor vehicle
- Bicycle repair shop
- Restroom
- Convenience Store
- Shooting location or model for movie / tv show

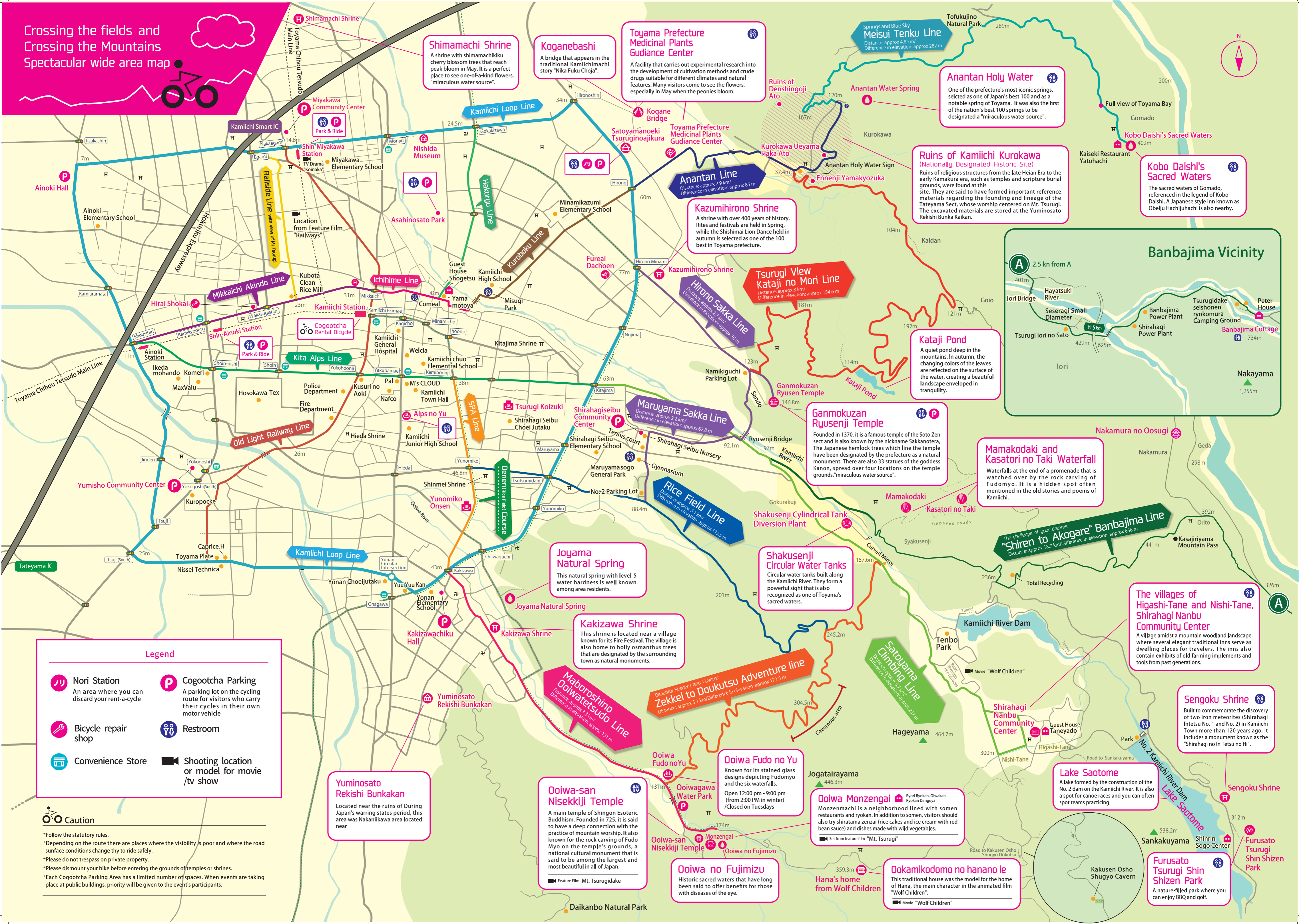
**Contact us**  
Kamiichi Town Association  
3-3-10 Shoinji, Kamiichi-Town, Nakanikawa District, Toyama Pref. Kamiichi station yard  
TEL: 076-472-1515 <http://kamiichi.net>  
Kamiichi Town Industry Division Commerce and Industry Tourism Group  
1-1-1 Shoinji, Kamiichi-Town, Nakanikawa District, Toyama Pref.  
TEL: 076-472-1111 <https://www.town.kamiichi.toyama.jp>

Access to Kamiichimachi	By railroad	When traveling by household automobile
Tokyo	2h 8min	4h
Nagoya	2h 40min	4h 30min
Osaka	3h 40min	5h 30min
Kanazawa	2h 20min	4h 30min

**About the rent-a-cycle service**  
\* Register for use at the "Kamiichimachi Tourist Association" office within Kamiichimachi Station  
\* A 1,000 yen deposit will be collected at the time of registration. 500 yen will be refunded when the bike is returned within the allotted time.  
\* Please present a valid proof of identity at the time of registration.  
\* A valid proof of identity includes a driver's license, health (University) ID card, passport, my number card, or student ID card.  
\* Applicants of high-school age or younger must have a guardian.  
\* Please be sure to return the cycle within the allotted time.  
\* The point of return will be the Kamiichimachi Tourist Association office with Kamiichimachi station.  
\* In addition to the Kamiichi Tourist Association offices, cycles can also be left behind at Nori Stations.  
\* When leaving your cycle behind, a fee of 500 yen will be incurred (ie, your 500 yen deposit will not be returned).

**Caution**  
\* Follow the statutory rules.  
\* Depending on the route there are places where the visibility is poor and where the road surface conditions change thy to ride safely.  
\* Please do not trespass on private property.  
\* Please dismount your bike before entering the grounds of temples or shrines.  
\* Each Cogootcha Parking Area has a limited number of spaces. When events are taking place at public buildings, priority will be given to the event's participants.

Crossing the fields and  
Crossing the Mountains  
Spectacular wide area map

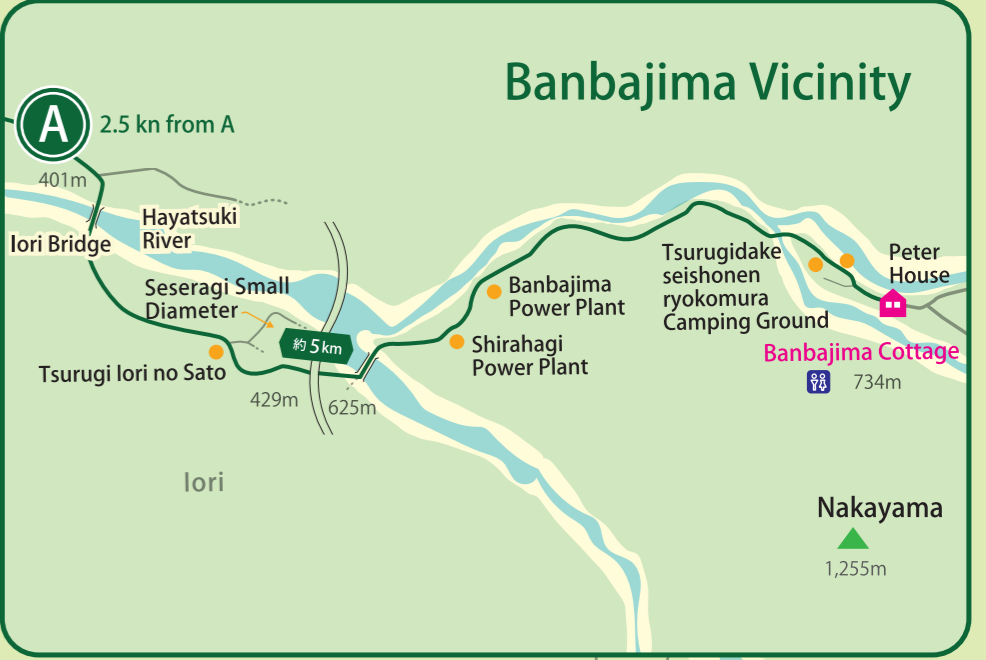


Legend

- Nori Station  
An area where you can discard your rent-a-cycle
- Cogootcha Parking  
A parking lot on the cycling route for visitors who carry their bicycles in their own motor vehicle
- Bicycle repair shop
- Restroom
- Convenience Store
- Shooting location or model for movie/tv show

Caution

- \*Follow the statutory rules.
- \*Depending on the route there are places where the visibility is poor and where the road surface conditions change try to ride safely.
- \*Please do not trespass on private property.
- \*Please dismount your bike before entering the grounds of temples or shrines.
- \*Each Cogootcha Parking Area has a limited number of spaces. When events are taking place at public buildings, priority will be given to the event's participants.



Banbajima Vicinity

The villages of Higashi-Tane and Nishi-Tane, Shirahagi Nanbu Community Center

A village amidst a mountain woodland landscape where several elegant traditional inns serve as dwelling places for travelers. The inns also contain exhibits of old farming implements and tools from past generations.

Sengoku Shrine

Built to commemorate the discovery of two iron meteorites (Shirahagi Intetsu No. 1 and No. 2) in Kamichi Town more than 120 years ago, it includes a monument known as the "Shirahagi no In Tetsu no HI".

Lake Saotome

A lake formed by the construction of the No. 2 dam on the Kamichi River. It is also a spot for canoe races and you can often spot teams practicing.

Furusato Tsurugi Shin Shizen Park

A nature-filled park where you can enjoy BBQ and golf.

Kataji Pond

A quiet pond deep in the mountains. In autumn, the changing colors of the leaves are reflected on the surface of the water, creating a beautiful landscape enveloped in tranquility.

Ganmokuzan Ryusenji Temple

Founded in 1370, it is a famous temple of the Soto Zen sect and is also known by the nickname Sakkanotera. The Japanese hemlock trees which line the temple have been designated by the prefecture as a natural monument. There are also 33 statues of the goddess Kanon, spread over four locations on the temple grounds. "miraculous water source".

Mamakodaki and Kasatori no Taki Waterfall

Waterfalls at the end of a promenade that is watched over by the rock carving of Fudomyo. It is a hidden spot often mentioned in the old stories and poems of Kamichi.

Shakusenji Circular Water Tanks

Circular water tanks built along the Kamichi River. They form a powerful sight that is also recognized as one of Toyama's sacred waters.

Joyama Natural Spring

This natural spring with level-5 water hardness is well known among area residents.

Kakizawa Shrine

This shrine is located near a village known for its Fire Festival. The village is also home to holly osmanthus trees that are designated by the surrounding town as natural monuments.

Ooiwa-san Nisekkiji Temple

A main temple of Shingon Esoteric Buddhism. Founded in 725, it is said to have a deep connection with the practice of mountain worship. It is also known for the rock carving of Fudo Myo on the temple's grounds, a national cultural monument that is said to be among the largest and most beautiful in all of Japan.

Ooiwa Fudono Yu

Known for its stained glass designs depicting Fudomyo and the six waterfalls. Open 12:00 pm - 9:00 pm (from 2:00 PM in winter) / Closed on Tuesdays

Ooiwa no Fujimizu

Historic sacred waters that have long been said to offer benefits for those with diseases of the eye.

Ooiwa Monzengai

Monzenmachi is a neighborhood lined with soba restaurants and ryokan. In addition to soba, visitors should also try shirataki zenzai (rice cakes and ice cream with red bean sauce) and dishes made with wild vegetables.

Oookamikodomo no hanano ie

This traditional house was the model for the home of Hana, the main character in the animated film "Wolf Children".

Shimamachi Shrine

A shrine with shimamachikiku cherry blossom trees that reach peak bloom in May. It is a perfect place to see one-of-a-kind flowers. "miraculous water source".

Koganebashi

A bridge that appears in the traditional Kamichimachi story "Nika Fuku Choja".

Toyama Prefecture Medicinal Plants Guidance Center

A facility that carries out experimental research into the development of cultivation methods and crude drugs suitable for different climates and natural features. Many visitors come to see the flowers, especially in May when the peonies bloom.

Kazumihirono Shrine

A shrine with over 400 years of history. Rites and festivals are held in Spring, while the Shishimai Lion Dance held in autumn is selected as one of the 100 best in Toyama prefecture.

Tsurugi View Kataji no Mori Line

Distance: approx. 8 km / Difference in elevation: approx. 154.6 m

Hirono Sakka Line

Distance: approx. 4 km / Difference in elevation: approx. 70 m

Maruyama Sakka Line

Distance: approx. 2.2 km / Difference in elevation: approx. 62.8 m

Rice Field Line

Distance: approx. 5 km / Difference in elevation: approx. 123.5 m

Joyama Natural Spring

This natural spring with level-5 water hardness is well known among area residents.

Kakizawa Shrine

This shrine is located near a village known for its Fire Festival. The village is also home to holly osmanthus trees that are designated by the surrounding town as natural monuments.

Maboroshino Ooiwatersudo Line

Distance: approx. 3.3 km / Difference in elevation: approx. 131 m

Zekkei to Doukutsu Adventure line

Distance: approx. 5.1 km / Difference in elevation: approx. 173.5 m

Ooiwa-san Nisekkiji Temple

A main temple of Shingon Esoteric Buddhism. Founded in 725, it is said to have a deep connection with the practice of mountain worship. It is also known for the rock carving of Fudo Myo on the temple's grounds, a national cultural monument that is said to be among the largest and most beautiful in all of Japan.

Ooiwa Fudono Yu

Known for its stained glass designs depicting Fudomyo and the six waterfalls. Open 12:00 pm - 9:00 pm (from 2:00 PM in winter) / Closed on Tuesdays

Ooiwa no Fujimizu

Historic sacred waters that have long been said to offer benefits for those with diseases of the eye.

Ooiwa Monzengai

Monzenmachi is a neighborhood lined with soba restaurants and ryokan. In addition to soba, visitors should also try shirataki zenzai (rice cakes and ice cream with red bean sauce) and dishes made with wild vegetables.

Oookamikodomo no hanano ie

This traditional house was the model for the home of Hana, the main character in the animated film "Wolf Children".

Shimamachi Shrine

A shrine with shimamachikiku cherry blossom trees that reach peak bloom in May. It is a perfect place to see one-of-a-kind flowers. "miraculous water source".

Koganebashi

A bridge that appears in the traditional Kamichimachi story "Nika Fuku Choja".

Toyama Prefecture Medicinal Plants Guidance Center

A facility that carries out experimental research into the development of cultivation methods and crude drugs suitable for different climates and natural features. Many visitors come to see the flowers, especially in May when the peonies bloom.

Kazumihirono Shrine

A shrine with over 400 years of history. Rites and festivals are held in Spring, while the Shishimai Lion Dance held in autumn is selected as one of the 100 best in Toyama prefecture.

Tsurugi View Kataji no Mori Line

Distance: approx. 8 km / Difference in elevation: approx. 154.6 m

Hirono Sakka Line

Distance: approx. 4 km / Difference in elevation: approx. 70 m

Maruyama Sakka Line

Distance: approx. 2.2 km / Difference in elevation: approx. 62.8 m

Rice Field Line

Distance: approx. 5 km / Difference in elevation: approx. 123.5 m

Joyama Natural Spring

This natural spring with level-5 water hardness is well known among area residents.

Kakizawa Shrine

This shrine is located near a village known for its Fire Festival. The village is also home to holly osmanthus trees that are designated by the surrounding town as natural monuments.

Maboroshino Ooiwatersudo Line

Distance: approx. 3.3 km / Difference in elevation: approx. 131 m

Zekkei to Doukutsu Adventure line

Distance: approx. 5.1 km / Difference in elevation: approx. 173.5 m

Ooiwa-san Nisekkiji Temple

A main temple of Shingon Esoteric Buddhism. Founded in 725, it is said to have a deep connection with the practice of mountain worship. It is also known for the rock carving of Fudo Myo on the temple's grounds, a national cultural monument that is said to be among the largest and most beautiful in all of Japan.

Ooiwa Fudono Yu

Known for its stained glass designs depicting Fudomyo and the six waterfalls. Open 12:00 pm - 9:00 pm (from 2:00 PM in winter) / Closed on Tuesdays

Ooiwa no Fujimizu

Historic sacred waters that have long been said to offer benefits for those with diseases of the eye.

Ooiwa Monzengai

Monzenmachi is a neighborhood lined with soba restaurants and ryokan. In addition to soba, visitors should also try shirataki zenzai (rice cakes and ice cream with red bean sauce) and dishes made with wild vegetables.

Oookamikodomo no hanano ie

This traditional house was the model for the home of Hana, the main character in the animated film "Wolf Children".